

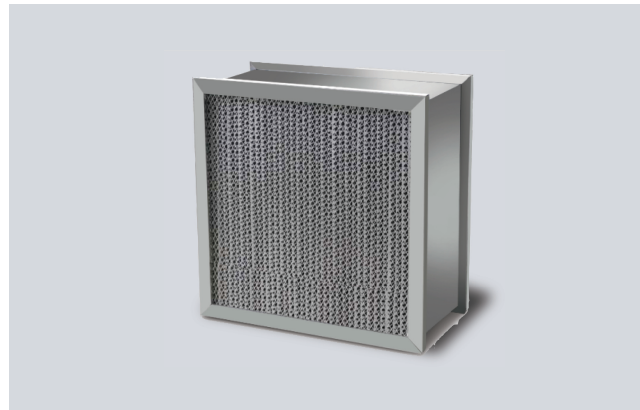
## FILTRO HEPA HT - Deep Pleated HEPA Filters for Hot Air Filtration

FILTRO HEPA HT filters are deep pleated aluminium separator filters with efficiencies ranging from H12 to H14 grades. These filters generally comes in metal constructions. Box type or double turned flanged version available.

### Filtrowin Models

#### FILTRO HEPA HT

Deep pleated HEPA filters  
Available in H12, 13 & H14 grades  
Galvanised steel or Stainless Cell  
Sides.



### MEDIA FEATURES AND TECHNICAL DETAILS

#### Filter Media

FILTRO HEPA HT filters are manufactured from continuous length superior quality micro glass fiber paper media, specially designed to operate at high temperature condition. The filter media is moisture resistant and fire retardant. The uniform and closed pleat filter pack grants a high crossing surface to hold the very fine dusts. FILTRO HEPA HT is available in H12 to H14 grades.

#### Filter Frames

The standard frame construction includes Galvanized steel and Stainless Steel double turned flange or box style designs. Aluminium corrugated separators are mainly used as pleat separators.

#### Sealant & Gaskets

The pleated media pack is encapsulated into the filter frame utilizing a high temperature silicon sealant or Ceramic cement based on customers specification. A flat profile Silicon gasket is used to ensure a leak free seal to the filter housing.

#### Media Separators

In FILTRO HEPA HT filters, the pleated media is evenly and accurately positioned by corrugated aluminium separators having hemmed ed ges to add strength and to protect the media pack. The FILTRO HEPA HT special versions utilizes corrugated stainless steel separators also.

#### Filter Testing

The finished filters undergoes a thorough quality checking .They are scan tested individually to ensure a leak proof performance and each filter posses the label showing the scan test result on it. We have testing facilities as per EN 1822 as well as MIL Standard. Testing of filters can be done accord ing to customer's request. The FILTRO HEPA HT filters are mainly available in two designs to meet customer demand . FILTRO HEPA HT1 can operate upto 250deg C where as FILTRO HEPA HT2 can operate till 300deg C

#### Selection Chart ▼

FILTRO HEPA HT1 and HT2	Rated Airflow @ 1" WG (CMH)			FILTRO HEPA HC-HT1& HT2	Rated Airflow @ 1" WG (CMH)		
	Filter Size (mm)	H12	H13		H14	Filter Size (mm)	H12
Size: 305 x 610 x 150	540	540	442	Size: 305 x 610 x 150	725	725	610
Size: 610 x 610 x 150	1140	1140	935	Size: 610 x 610 x 150	1530	1530	1275
Size: 305 x 610 x 292	970	970	935	Size: 305 x 610 x 292	1370	1370	1130
Size: 610 x 610 x 292	2040	2040	1700	Size: 610 x 610 x 292	2890	2890	2380

● Final Pressure Drop - 500 Pa ● Contact factory for non-standard size's information ●

All data are average indicative values with usual manufacturing and testing tolerances. We reserve the right to modify performance data without prior notices due to the constant technical improvement.

© Copyright: Every effort has been made to ensure that the information contained in this publication is accurate at the time of publishing. We assumes no responsibility or liability for typographical errors or omissions or for any misinterpretation of the information within the publication and reserves the right to change without notice.

