

Filtro HEPA HV - V Bank High Velocity HEPA Filters

Filtro HEPA HV filters are new generation High Velocity filters with HEPA efficiencies ranging from H13 to H14 grades. These filters offers an extremely low pressure drop, High Dust Holding Capacity, Longer Service Life and less maintenance costs.

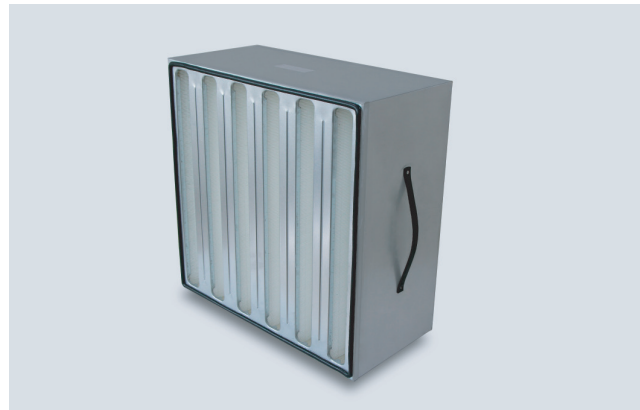
Filtrowin Models

Filtro HEPA HV

Mini pleated V Bank filters

Available in H13 and H14 grades

Metal or Wooden frame



MEDIA FEATURES AND TECHNICAL DETAILS

Filter Media

FILTRO HEPA HV filters are manufactured from continuous length superior quality micro glass fiber paper media available in various efficiencies from H13 - H14. The filter media is moisture resistant and fire retardant. Anti-microbial treated papers are also available for special applications. The uniform and closed pleat filter pack grants a high crossing surface to hold the very fine dusts.

Filter Frames

The standard frame construction includes fire retardant Wood Particle Board, Galvanized steel (16,18 or 24gauge) and anodized aluminium.

Sealant & Gaskets

The pleated media pack is encapsulated into the filter frame utilizing a two part high density fire retardant urethane elastomer. A flat profile neoprene gasket or a one-piece seamless urethane gasket is used to ensure a leak free seal to the filter housing. High temperature version is manufactured with ceramic sealant and temperature resistant gasket.

Media Separators

The FILTRO HEPA HV filters consist of closely pleated media, positively spaced using thermosetting beads. This type of pleat separation allows optimum media utilization and offers very low pressure drops.

Filter Testing

The finished filters undergoes a thorough quality checking. They are scan tested individually to ensure a leak proof performance and each filter posses the label showing the scan test result on it. We have testing facilities as per EN 779 : 1822 Standard. Testing of filters can be done according to customer's request.

Selection Chart ▼

Filter Sizes (Inches)	Filter Size (mm)	Frame Type	Rated Airflow (CMH) @ 250 Pa	
			H13	H14
12 x 12 x 12	Size: 305 x 305 x 292	Metal / Wood	850 / 750	660 / 575
12 x 24 x 12	Size: 305 x 610 x 292	Metal / Wood	1870 / 1500	1375 / 1150
24 x 24 x 12	Size: 610 x 610 x 292	Metal / Wood	4080 / 3400	3125 / 2620
24 x 30 x 12	Size: 610 x 762 x 292	Metal / Wood	5100 / 4250	3900 / 3275

● Maximum Pressure Drop - 1000 Pa

● Maximum Operating Temperature / Humidity - 90 ° C / 90%

All data are average indicative values with usual manufacturing and testing tolerances. We reserve the right to modify performance data without prior notices due to the constant technical improvement.

© Copyright: Every effort has been made to ensure that the information contained in this publication is accurate at the time of publishing. We assume no responsibility or liability for typographical errors or omissions or for any misinterpretation of the information within the publication and reserves the right to change without notice.

