

## Filtro HEPA SC & HC - Deep Pleated HEPA Filters

Filtro HEPA SC & HC filters are deep pleated aluminium separator filters with efficiencies ranging from H12 to H14 grades. These filters generally come in wood and metal constructions. Box type or double turned flanged version available.

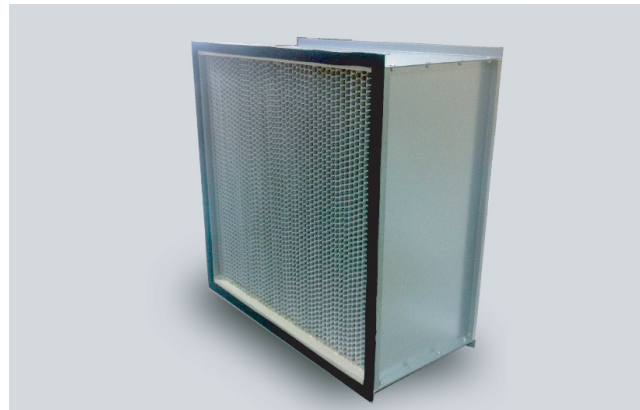
### Filtrowin Models

#### Filtro HEPA SC & HC

Deep pleated HEPA filters

Available in H12, H13 & H14 grades

Metal or Wooden frame



### MEDIA FEATURES AND TECHNICAL DETAILS

#### Filter Media

FILTRO HEPA SC & HC filters are manufactured from continuous length superior quality micro glass fiber paper media available in various efficiency grades from H12 to H14. The filter media is moisture resistant and fire retardant. Anti-microbial treated papers are also available for special applications. The uniform and closed pleat filter pack grants a high crossing surface to hold the very fine dusts.

#### Filter Frames

The standard frame construction includes fire retardant Wood Particle Board, Galvanized steel (16, 18 or 24 gauge) and anodized aluminium. High temperature versions are constructed with Stainless steel frames.

#### Sealant & Gaskets

The pleated media pack is encapsulated into the filter frame utilizing a two-part high density urethane elastomer. A flat profile neoprene gasket or a one-piece seamless urethane gasket is used to ensure a leak-free seal to the filter housing. High temperature versions are manufactured with ceramic sealant and temperature-resistant gasket.

#### Media Separators

In FILTRO HEPA SC & HC filters, the pleated media is evenly and accurately positioned by corrugated aluminium separators having hemmed edges to add strength and to protect the media pack. The FILTRO HEPA HT utilizes corrugated stainless steel separators.

#### Filter Testing

The finished filters undergo a thorough quality checking. They are scan tested individually to ensure a leak-proof performance and each filter possesses the label showing the scan test result on it. We have testing facilities as per EN 779:1822 Standard. Testing of filters can be done according to customer's request.

#### Selection Chart ▼

FILTRO HEPA SC	Rated Airflow @ 1" WG (CMH)			FILTRO HEPA HC	Rated Airflow @ 1" WG (CMH)		
	Filter Size (mm)	H12	H13		H14	Filter Size (mm)	H12
Size: 305 x 610 x 150	540	540	442	Size: 305 x 610 x 150	725	725	610
Size: 610 x 610 x 150	1140	1140	935	Size: 610 x 610 x 150	1530	1530	1275
Size: 305 x 610 x 292	970	970	935	Size: 305 x 610 x 292	1370	1370	1130
Size: 610 x 610 x 292	2040	2040	1700	Size: 610 x 610 x 292	2890	2890	2380

● Final Pressure Drop - 500 Pa ● Maximum Operating Temperature / Humidity - 90 ° C / 90% ● Contact factory for non-standard size's information

All data are average indicative values with usual manufacturing and testing tolerances. We reserve the right to modify performance data without prior notices due to the constant technical improvement.

© Copyright: Every effort has been made to ensure that the information contained in this publication is accurate at the time of publishing. We assume no responsibility or liability for typographical errors or omissions or for any misinterpretation of the information within the publication and reserves the right to change without notice.

